

N° 119

**APPLICATION OF ENTERPRISE AND PROCESS
ARCHITECTURE PATTERNS IN HOSPITALS**

Oscar Barros and Cristian Julio

**DOCUMENTOS DE TRABAJO
Serie Gestión**

APPLICATION OF ENTERPRISE AND PROCESS ARCHITECTURE PATTERNS IN HOSPITALS

Oscar Barros and Cristian Julio
Master in Business Engineering
Department of Industrial Engineering, University of Chile

The Project

In a previous paper in BPTrends [7], of which this is a sequel, we presented our approach to enterprise and process architecture design. Such approach is based on the proposal of generic architecture and process patterns that can be reused in a given domain. Here we present the application of such an idea to the domain of hospital management.

This application is part of a large project we are developing for public hospitals in Chile, which is supported by the Health Minister. The objective is to introduce innovative businesses practices and state of the art IT to improve service for patients and generate large increments in productivity in the use of hospital resources. This will result in new processes and IT applications to support them that will be eventually be implemented in all the public hospitals of the country.

Architecture and Process Design

Our approach starts with the developing of a process architecture. To do this we used the Shared Services Architecture Pattern of the previous paper [7], which applies fully in this case. Shared services are a part of hospital practices, since the several value chains for different services to clients –emergency, ambulatory services and hospitalization- use many internal common services such as laboratory services, operating rooms for surgeries, food services and cleaning services. So our architecture pattern applies straightforwardly to this domain. The specialization of our pattern to hospitals then results in the architecture of Figure 1. Such architecture has been fully validated with the management of three representative public hospitals and also with the staff of one of the largest private hospitals in Chile. The complete architecture was detailed by decomposing first level processes into two more levels of detail as we will present below.

From the architecture we select, to present more details, processes which have proved to have more potential to produce great improvements in service and optimization in the use of resources. They are Demand Analysis and Management and Operating Room (OR) Service, which are part of the diagrams in Figures 2 and 3.

In doing the decompositions shown in Figures 2 to 5, a general process pattern previously developed for Macro1 was used [1,2,3,4,5]. For example, processes such as Demand Analysis and Management, State Status Service, Demand Forecasting and Characterization, Define Correcting Actions, Demand Analysis and Operating Room Scheduling are instances or specializations, in our terminology, of general processes or subprocesses defined in Macro1; also many of the flows in these decompositions are specializations of general flows defined in the pattern.

In Figure 2 the decomposition of Service Lines for Patients is shown. There are three service lines at Hospitals, to which patients can access directly or by being referred from another line. The detail of these lines is shown in the following:

- **Emergency Medical Service: Attends non-elective patients, e.g., that need urgent medical attention and, as consequence, cannot be programmed with anticipation. Each patient that arrives to this service line is categorized according to the severity of its illness, in such a way that more urgent patients are attended first. Here, the patient may also be referred to any of the other service lines, in case it needs to be hospitalized or requires specialized medical attention.**
- **Ambulatory Elective Care Service: Attends elective patients, e.g., those which medical attentions can be programmed with anticipation. In this line, medical consultation takes place and some procedures are performed.**
- **Hospitalization Service: Attends elective and non elective patients that must be hospitalized, either to prepare to or recover from a surgery or procedure.**

As well as the mentioned service lines, other complementary services might be offered to single patients or groups; for example, health plans for specific profiles of patients or certain company employees. This takes place in the Other Services Offer line, which services are typically found in the private health system.

The process Demand Analysis and Management is defined as a shared process for all service lines, in such a way that it captures the behavior of their demand and allows them to prepare their resources to attend such demand. This process will be described in detail below.

In Figure 3 the decomposition of Internal Shared Services is shown. Those services are shared by the service lines mentioned above and they are a fundamental part of the service provided in them. These services are the following:

- **Medical Appointments Service: Assigns to patients a medical appointment for any kind of elective medical attention: consultations, exams, procedures, etc. The patient may request directly the appointment to the service or through the service lines.**

- **Diagnose Tests Service:** Performs all necessary tests to diagnose the patient. For example, blood tests, x-rays, lab analysis, among others.
- **Operating Room Service:** Receives and prioritizes the waiting list for surgery, schedules the Operating Rooms and performs the programmed surgeries. This service will be explained in detail below.
- **Other Internal Services:** Contains other services shared for the service lines for patients, such as blood bank, internal and external transportation of patients, food and cleaning service, sterilization, etc.
- **Procedures and Treatments Service:** Provides procedures and treatments to the patients that do not require a doctor to be performed. For example, wound healing treatment, physical therapy and vaccination.
- **Medical Supplies Service:** Provides the medical supplies requested for the service lines and internal shared services.
- **Bed Service:** Provides and manages the different bed types for the service lines and internal shared services. Its principal goal is to locate each patient in the right bed at the right time, according to the complexity of the patients' pathology and its evolution.
- **State Status Service:** Stores, updates and provides the state of every process of the hospital; so it is a shared information service.

Demand Analysis and Management is the process that should be able to forecast demand for hospital services and manage such demand and the hospital capacity to assure that an adequate balance is reached. The basic idea is to proactively insure the all the relevant demand is processed with a required quality of service and that large current lists of patients waiting for services are eliminated. Our premise was that better use of resources, without additional investments in capacity, could reduce unsatisfied customers, which is starting to be proved true according to the results we will present in the last section. The detail of this process is shown in Figure 4 and its sub processes are the following:

- **Demand Forecasting and Characterization:** This process uses a forecast and characterization model that allows the hospital to anticipate the behavior of its demand, through its periodical execution and the analysis of its results.

- **Capacity Analysis:** Evaluates if the capacity of the hospital will be enough to attend the demand forecasted in the previous process, depending on the resources required for each segment of patients. If lack or excess of capacity is concluded, then actions can be taken in order to decrease the expected demand or adjust capacity.
- **Define Correcting Actions:** Defines the correcting actions to decrease the demand for services or adjust capacity. For example, to inform non-elective patients with certain pathologies or characteristics that they can be attended in other health services.
- **Services Lines and Internal Services Planning:** Analyzes the impact that previous correcting actions will have on the forecasted demand, in order to design plans that improve the quality of service for the new demand expected.

Operating Room Service is the process that takes the demand for surgical interventions, prioritizes it and schedules it in such a way that maximum waiting times, specified by doctors to perform an intervention due to medical reasons, are met and use of resources associated to the facilities are optimized. The detail of this process is shown in Figure 5 and its sub processes are the following:

- **Demand Analysis:** In this sub process, medical orders for surgery are added to the waiting list and then prioritized, according to medical criteria previously formalized as business logic. Afterwards, a waiting list analysis determines if the resources will be enough to process that demand on time, or if further efforts must be made in order to achieve it.
- **Operating Room Scheduling:** Generates the OR schedule using the waiting list prioritized in the previous process. Though this scheduling is based on the maximization of the use of facilities, it also includes good medical practices to decide the order and time of surgical interventions.
- **Surgery Resources Scheduling:** Assign the resources that are necessary to perform the surgical interventions previously scheduled.
- **Surgery Performing:** Executes every surgery scheduled, including the preparation of the patient, its recovery, and the surgery itself. After surgery is performed, its information is registered and the patient is removed from the waiting list.

The last level of detail of the Hospital Architecture concerns the procedural execution of each of the sub processes of Figures 4 and 5. Such execution must show the sequence of activities involved, the logic of the flow and the computer application support that each activity will

have. So the modeling style changes from the activity flow diagrams of previous figures to full BPMN models that are formal, in order to make possible their simulation and, eventually, execute them with, for example, a BPEL orchestration. To show how this is done, we selected two sub processes from Figures 4 and 5, and present their diagrams in Figures 6 and 7.

Demand Forecasting and Characterization: In the first activities of this process, data to be used in forecasting is obtained, consolidated and showed to the analyst for its cleaning and preparation to enter the model. This allows the analyst not only to check the quality of such data, but also to incorporate qualitative criteria about the behavior of the demand. For example, an outlier could be replaced by an appropriate average. Once everything is set to run the model, the analyst requests the system to forecast the demand. The forecasting model, that was built using neural networks, receives the previous data and estimates the aggregated demand expected for the next 12 months, within a probabilistic range of error. Afterwards, this demand is segmented and characterized based on its historical behavior. Then the analyst decides which point of the forecasted demand range, formed with the mentioned error, will be used to manage its resources in order to attend such demand, depending on contingent events and its experience. With this analysis the process ends.

Operating Room Scheduling: This process was conceived to be executed with a certain periodicity; the scheduler requests the software to schedule the operating rooms, which is done using a heuristic that include best practices for OR scheduling from the medical and efficient use of resources perspectives. For example, from the resources perspective, it is considered better to perform ambulatory surgical interventions first in the morning in such a way that the resource bed will be released for another patient in the afternoon. After the software suggests a proposal of scheduling, the scheduler has the possibility to change the order in which surgeries will be performed, postpone patients and/or include non scheduled patients from the waiting list, according to its experience. The final schedule is then saved and sent for patients' confirmation and resources scheduling.

Although we have used two modeling styles in the design of the processes above - process flow diagrams and full BPMN diagrams -, they are fully compatible and can be implemented with the same BPMN modeling tool, as it was discussed in a previous paper [6].

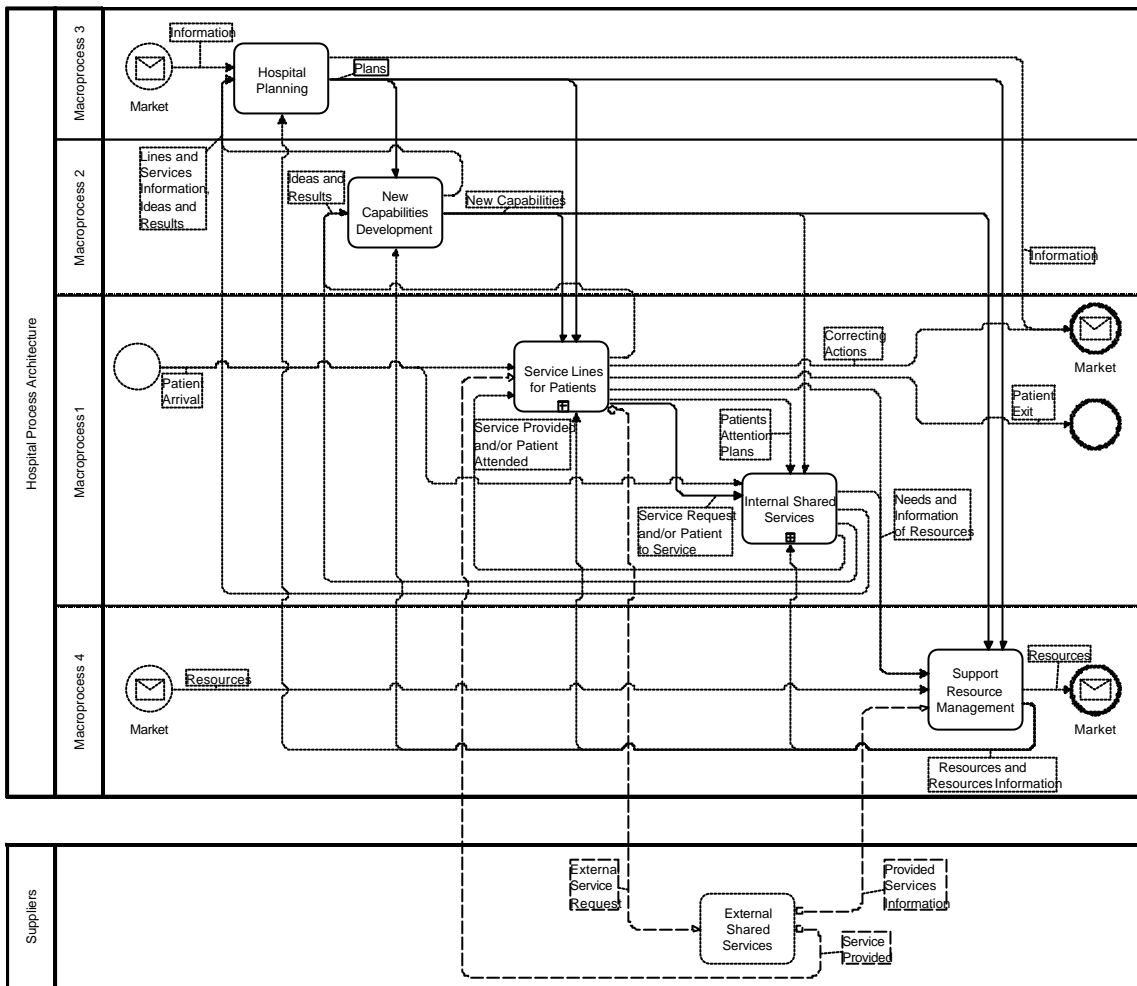


Figure 1: Process Architecture for Hospitals

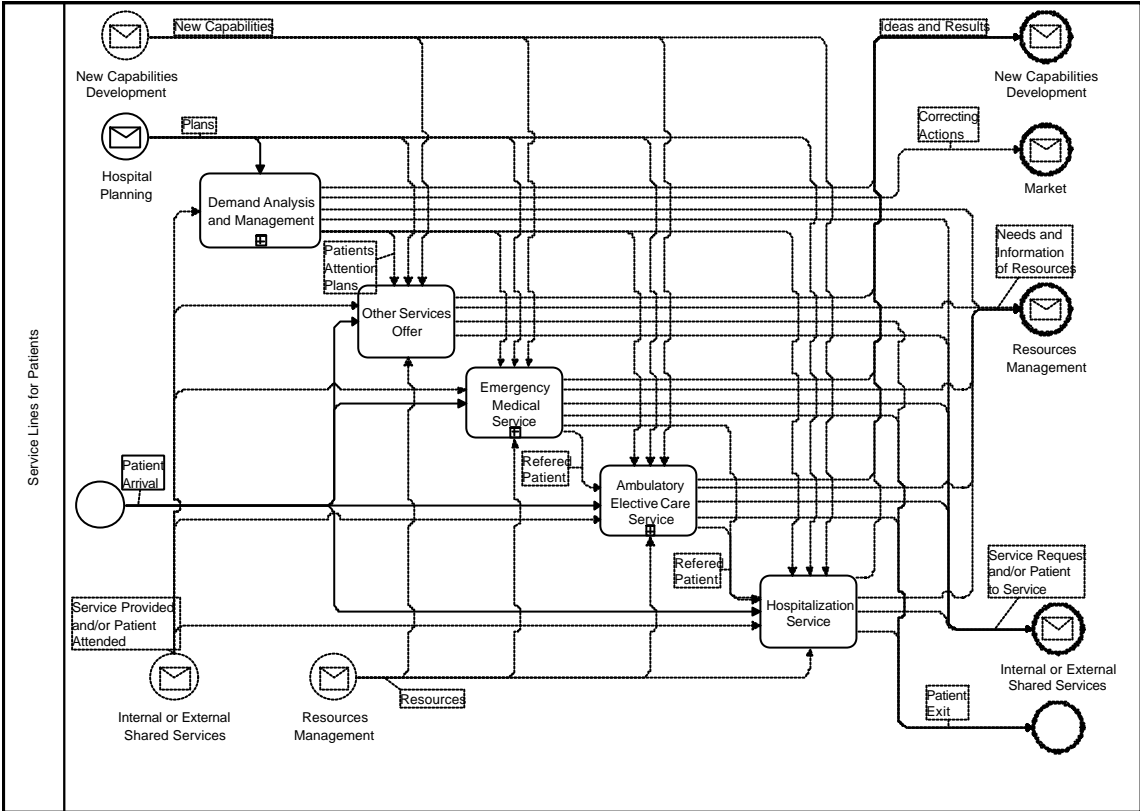


Figure 2: Detail of Services Lines for Patients

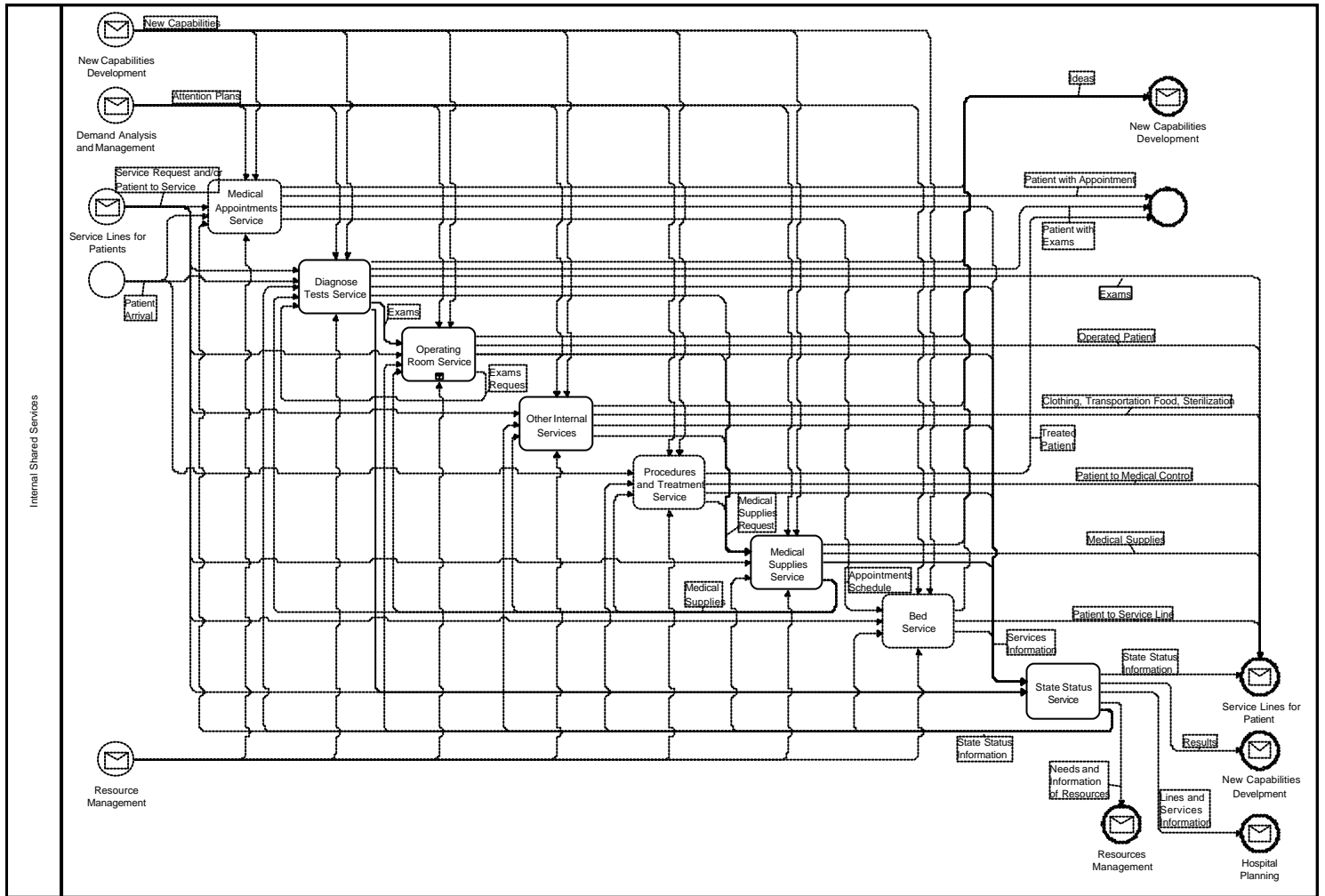


Figure 3: Detail of Internal Shared Services

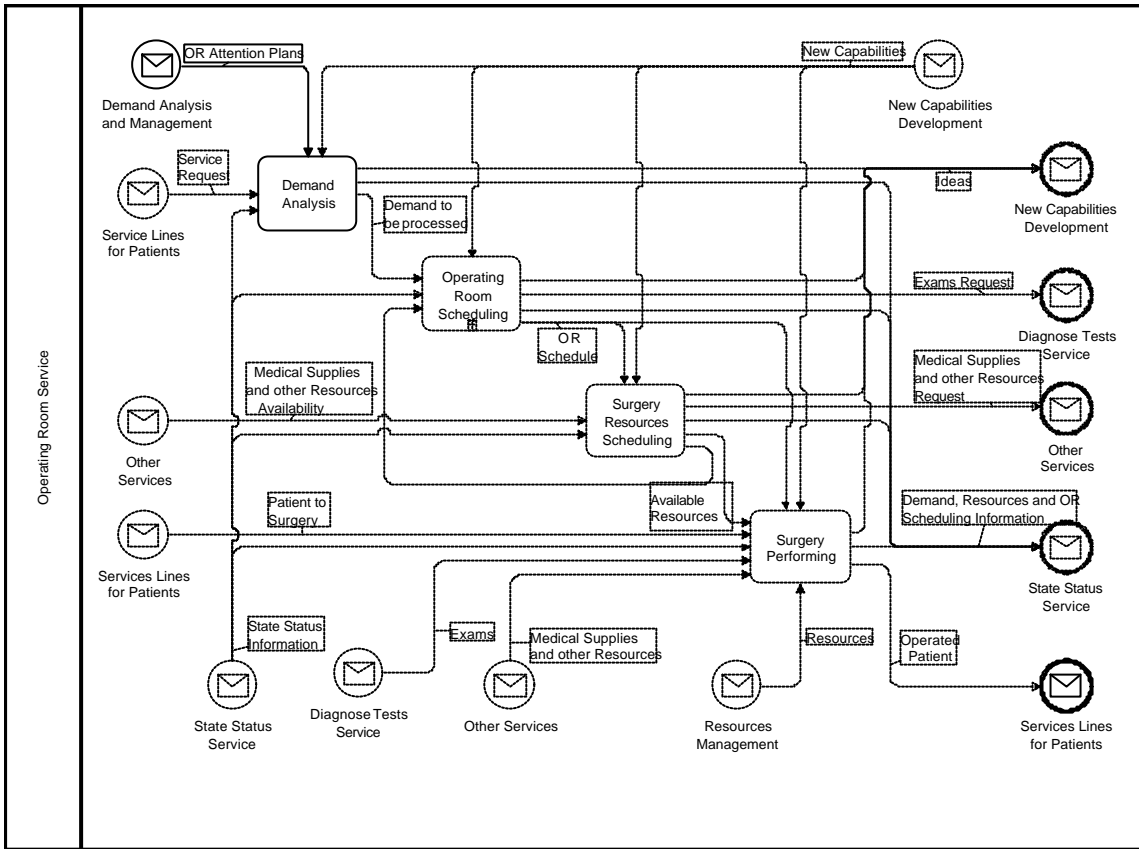


Figure 5: Detail of Operating Room Service

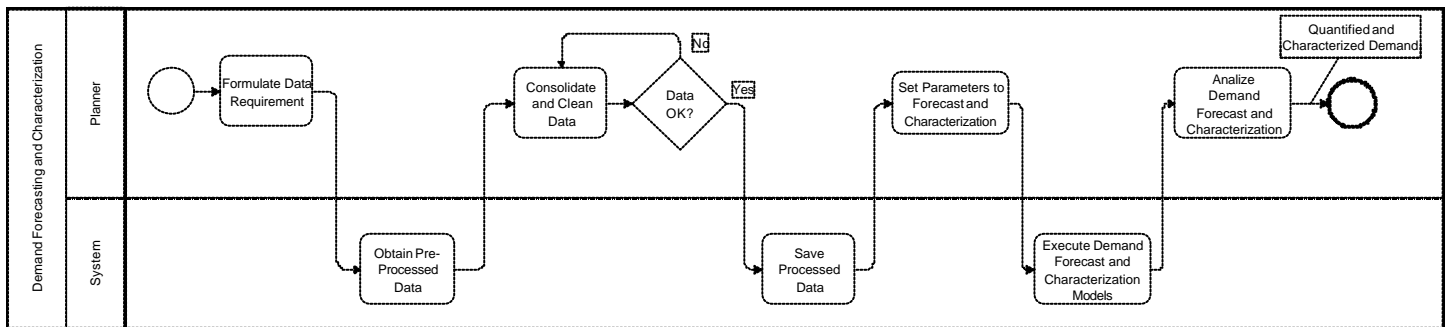


Figure 6: BPMN diagram for Demand Forecasting and Characterization

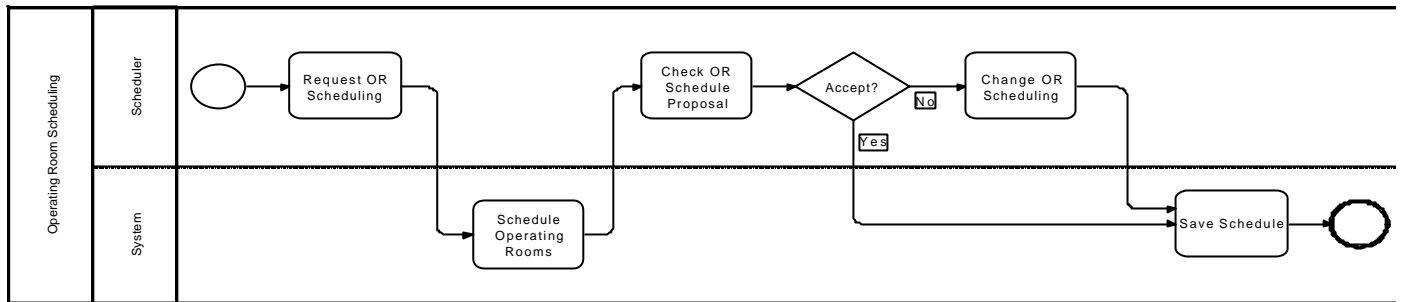


Figure 7: BPMN diagram for Operating Room Scheduling

We notice that the process design we have presented includes relationships to the other components of the Enterprise Architecture, which were specified in the previous paper [7]. Thus the relationship to the organizational structure is included in the process definitions, such as share services, and in the roles we define in the BPMN diagrams and the tasks that are assigned to each role, which can be new roles with new practices. In fact this means we are redesigning the organization at the same time we design the processes. Also the relationships to the systems architecture and IT infrastructure are included in the diagrams. Hence system's support is shown explicitly in the diagrams, which requires that new systems should be designed and related to current systems architecture. The IT architecture is a consequence of new systems requirements, since they may need its extension due to new technologies used by the design. For example, in the case of hospitals we used a BPEL orchestration technology for the execution of the BPMN models, which implies a change in the IT architecture of hospitals in order to integrate this technology with current hardware and software.

Experience and Conclusions

The experience with the application of the Process Architecture Patterns has been successful in that:

- **It was possible to develop a process architecture for hospitals in a very short time (two months), starting with the Shared Services Pattern. The resulting architecture was fully validated by hospital management and allowed us to select some of the key processes to design them in detail by using our process patterns.**
- **The designs were tested by executing the methods and logic proposed by them and determining results that can be obtained by implementing such designs. In particular we processed the demand data, developed neural network models for forecasting and showed that forecast has average errors of about 5%, which provides a very good basis for a capacity planning that it is not available today. Also we tested the heuristics for operating room list prioritizing and scheduling, showing that service can be improved by doing a more careful selection of patients to go into surgery and rate of use of facilities can be improved from about 50% to more than 80%.**
- **Formal BPMN models for processes of the lowest level of detail allowed us to execute them by using a BPEL orchestration tool on a BPEL engine and web services connection to implement complex logic and connect to data bases that contain the data processes need. This execution was in a pilot way, but with full user participation, before going into the full implementation of the new processes.**

This experience, which was accomplished in little more than six months, has been confirmed by other cases we have developed for other organizations, where it has also been possible to generate architectures in very short times, starting with the patterns. In particular, among others, architectures have been designed for a large mining company, one of the leading telecoms in Chile and an international airline.

All the experience above points to the conclusion that it has advantages, in terms of speed and quality of design, to have patterns of the type we have proposed to do architecture and process design. Furthermore, the combination with formal process modeling has also shown that process implementation with IT support can also be accelerated with process execution with appropriate BPEL orchestration tools. This also has the advantage of providing flexibility for changes, since this can be done by editing process models. Another interesting feature of our approach is the insertion of analytics within the process to make possible the optimal use of resources, such as hospital capacity and operating room facilities.

References

1. Barros, O. **Rediseño de Procesos de Negocios Mediante el Uso de Patrones**. Dolmen, 2000.
2. Barros, O. **Ingeniería e Business: Ingeniería de Negocios para la Economía Digital**. J C. Sáez Editor, 2004
3. Barros, O. **A Novel Approach to Joint Business and Information System Design**, *Journal of Computer Information Systems*, Spring 2005.
4. Barros, O. **Business Process Patterns and Frameworks: Reusing Knowledge in Process Innovation**, *Business Process Management Journal*, January 2007.
5. Barros, O. **Business Process Architecture and Design**, *BPTrends*, May 2007, www.bptrends.com
6. Barros, O., C. Julio. **Integrating Modeling at Several Design Abstraction Levels in Architecture and Process Design**, *BPTrends*, Oct 2009, www.bptrends.com.
7. Barros, O., C. Julio. **Enterprise and Process Architecture Patterns**, *BPTrends*, ?? 2010, www.bptrends.com

Dr. Oscar Barros (Ph.D.U.Wisconsin) is the director of the Master in Business Engineering (MBE) at the University of Chile and is a businessman in the IT industry in Chile. He has written ten books with more than 100,000 copies sold. He has also published widely in international scientific and technical journals. Dr. Barros has also been active in consulting, having directed many large scale projects on Operations Research Modeling , Information Systems Development and Business Process Innovation. He is currently working on the development of business architecture and process patterns and supporting software; results of this work can be seen at www.obarros.cl and blog.obarros.cl

Centro de Gestión (CEGES)
Departamento de Ingeniería Industrial
Universidad de Chile

Serie Gestión

Nota: Copias individuales pueden pedirse a ceges@dii.uchile.cl

Note: Working papers are available by request at ceges@dii.uchile.cl

2001

- 29. Modelos de Negocios en Internet (Versión Preliminar)**
Oscar Barros V.
- 30. Sociotecnología: Construcción de Capital Social para el Tercer Milenio**
Carlos Vignolo F.
- 31. Capital Social, Cultura Organizativa y Transversalidad en la Gestión Pública**
Koldo Echebarria Ariznabarreta
- 32. Reforma del Estado, Modernización de la Gestión Pública y Construcción de Capital Social: El Caso Chileno (1994-2000)**
Álvaro V. Ramírez Alujas
- 33. Volver a los 17: Los Desafíos de la Gestión Política (Liderazgo, Capital Social y Creación de Valor Público: Conjeturas desde Chile)**
Sergio Spoerer H.

2002

- 34. Componentes de Lógica del Negocio desarrollados a partir de Patrones de Procesos**
Oscar Barros V.
- 35. Modelo de Diseño y Ejecución de Estrategias de Negocios**
Enrique Jofré R.
- 36. The Derivatives Markets in Latin America with an emphasis on Chile**
Viviana Fernández
- 37. How sensitive is volatility to exchange rate regimes?**
Viviana Fernández
- 38. Gobierno Corporativo en Chile después de la Ley de Opas**
Teodoro Wigodski S. y Franco Zúñiga G.
- 39. Desencadenando la Innovación en la Era de la Información y el Vértigo Nihilista**
Carlos Vignolo F.
- 40. La Formación de Directivos como Expansión de la Conciencia de Sí**
Carlos Vignolo F.
- 41. Segmenting shoppers according to their basket composition: implications for Cross-Category Management**
Máximo Bosch y Andrés Musalem
- 42. Contra la Pobreza: Expresividad Social y Ética Pública**
Sergio Spoerer
- 43. Negative Liquidity Premia and the Shape of the Term Structure of Interest Rates**

Viviana Fernández

2003

- 44. Evaluación de Prácticas de Gestión en la Cadena de Valor de Empresas Chilenas
Oscar Barros, Samuel Varas y Richard Weber**
- 45. Estado e Impacto de las TIC en Empresas Chilenas
Oscar Barros, Samuel Varas y Antonio Holgado**
- 46. Estudio de los Efectos de la Introducción de un Producto de Marca Propia en una Cadena de Retail
Máximo Bosch, Ricardo Montoya y Rodrigo Inostroza**
- 47. Extreme Value Theory and Value at Risk
Viviana Fernández**
- 48. Evaluación Multicriterio: aplicaciones para la Formulación de Proyectos de Infraestructura Deportiva
Sara Arancibia, Eduardo Contreras, Sergio Mella, Pablo Torres y Ignacio Villablanca**
- 49. Los Productos Derivados en Chile y su Mecánica
Luis Morales y Viviana Fernández**
- 50. El Desarrollo como un Proceso Conversacional de Construcción de Capital Social: Marco Teórico, una Propuesta Sociotecnológica y un Caso de Aplicación en la Región de Aysén
Carlos Vignolo F., Christian Potocnjak y Alvaro Ramírez A.**
- 51. Extreme value theory: Value at risk and returns dependence around the world
Viviana Fernández**
- 52. Parallel Replacement under Multifactor Productivity
Máximo Bosch y Samuel Varas**
- 53. Extremal Dependence in Exchange Rate Markets
Viviana Fernández**
- 54. Incertidumbre y Mecanismo Regulatorio Óptimo en los Servicios Básicos Chilenos
Eduardo Contreras y Eduardo Saavedra**

2004

- 55. The Credit Channel in an Emerging Economy
Viviana Fernández**
- 56. Frameworks Derived from Business Process Patterns
Oscar Barros y Samuel Varas**
- 57. The Capm and Value at Risk at Different Time Scales
Viviana Fernández**
- 58. La Formación de Líderes Innovadores como Expansión de la Conciencia de Sí: El Caso del Diplomado en Habilidades Directivas en la Región del Bío-Bío – Chile
Carlos Vignolo, Sergio Spoerer, Claudia Arratia y Sebastián Depolo**

59. **Análisis Estratégico de la Industria Bancaria Chilena**
Teodoro Wigodski S. y Carla Torres de la Maza
60. **A Novel Approach to Joint Business and System Design**
Oscar Barros
61. **Los deberes del director de empresas y principales ejecutivos Administración de crisis: navegando en medio de la tormenta.**
Teodoro Wigodski
62. **No más VAN: el Value at Risk (VaR) del VAN, una nueva metodología para análisis de riesgo**
Eduardo Contreras y José Miguel Cruz
63. **Nuevas perspectivas en la formación de directivos: habilidades, tecnología y aprendizaje**
Sergio Spoerer H. y Carlos Vignolo F.
64. **Time Scale Decomposition of Price Transmission in International Markets**
Viviana Fernández
65. **Business Process Patterns and Frameworks: Reusing Knowledge in Process Innovation**
Oscar Barros
66. **Análisis de Desempeño de las Categorías en un Supermercado Usando Data Envelopment Analysis**
Máximo Bosch P., Marcel Goic F. y Pablo Bustos S.
67. **Risk Management in the Chilean Financial Market The VaR Revolution**
José Miguel Cruz
- 2005
68. **Externalizando el Diseño del Servicio Turístico en los Clientes: Teoría y un Caso en Chile**
Carlos Vignolo Friz, Esteban Zárate Rojas, Andrea Martínez Rivera, Sergio Celis Guzmán y Carlos Ramírez Correa
69. **La Medición de Faltantes en Gondola**
Máximo Bosch, Rafael Hilger y Ariel Schilkut
70. **Diseño de un Instrumento de Estimación de Impacto para Eventos Auspiciados por una Empresa Periodística**
Máximo Bosch P., Marcel Goic F. y Macarena Jara D.
71. **Programa de Formación en Ética para Gerentes y Directivos del Siglo XXI: Análisis de las Mejores Prácticas Educativas**
Yuli Hincapie y Teodoro Wigodski
72. **Adjustment of the WACC with Subsidized Debt in the Presence of Corporate Taxes: the N-Period Case**
Ignacio Vélez-Pareja, Joseph Tham y Viviana Fernández
73. **Aplicación de Algoritmos Genéticos para el Mejoramiento del Proceso de Programación del Rodaje en la Industria del Cine Independiente**

- Marcel Goic F. y Carlos Caballero V.**
74. **Seguro de Responsabilidad de Directores y Ejecutivos para el Buen Gobierno Corporativo**
Teodoro Wigodski y Héctor H. Gaitán Peña
75. **Creatividad e Intuición: Interpretación desde el Mundo Empresarial**
Teodoro Wigodski
76. **La Reforma del Estado en Chile 1990-2005. Balance y Propuestas de Futuro**
Mario Weissbluth
77. **La Tasa Social de Descuento en Chile**
Fernando Cartes, Eduardo Contreras y José Miguel Cruz
78. **Assessing an Active Induction and Teaming Up Program at the University of Chile**
Patricio Poblete, Carlos Vignolo, Sergio Celis, William Young y Carlos Alborno
- 2006**
79. **Marco Institucional y trabas al Financiamiento a la Exploración y Mediana Minería en Chile**
Eduardo Contreras y Christian Moscoso
80. **Modelo de Pronóstico de Ventas.**
Viviana Fernández
81. **La Ingeniería de Negocios y Enterprise Architecture**
Óscar Barros V.
82. **El Valor Estratégico de la innovación en los Procesos de Negocios**
Oscar Barros V.
83. **Strategic Management of Clusters: The Case of the Chilean Salmon Industry**
Carlos Vignolo F., Gastón Held B., Juan Pablo Zanlungo M
84. **Continuous Innovation Model for an Introductory Course to Industrial Engineering**
Carlos Vignolo, Sergio Celis , Ana Miriam Ramírez
85. **Bolsa de Productos y Bolsa Agrícola en Chile: un análisis desde la teoría de carteras**
Eduardo Contreras, Sebastián Salinas
- 2007**
86. **Arquitectura Y Diseño De Procesos De Negocios**
Óscar Barros V.
87. **Personalizando la Atención del Cliente Digital**
Juan Velásquez S.
88. **¿En el país de las maravillas?: equipos de alta gerencia y cultura empresarial**
Sergio Spoerer
89. **Responsabilidad Social Empresarial: El Caso De Forestal Mininco S.A. y Comunidades Mapuches**

- Teodoro Wigodski**
90. **Business Processes Architecture And Design**
Óscar Barros V.
91. **Gestión Estratégica: Síntesis Integradora y Dilemas Abiertos**
Teodoro Wigodski
92. **Evaluación Multicriterio para Programas y Proyectos Públicos**
Eduardo Contreras, Juan Francisco Pacheco
93. **Gestión De Crisis: Nuevas Capacidades Para Un Mundo Complejo.**
Teodoro Wigodski
94. **Tres Años Del Sistema De Alta Dirección Pública En Chile: Balance Y Perspectivas**
Rossana Costa y Mario Waissbluth
95. **Ética En Las Organizaciones De Asistencia Sanitaria**
Teodoro Wigodski
- 2008**
96. **Caso Chispas: Lealtad debida en el directorio de una sociedad**
Teodoro Wigodski
97. **Caso Falabella – Almacenes París: Profesionalización de la Empresa Familiar**
Teodoro Wigodski
98. **Evaluación de inversiones bajo incertidumbre: teoría y aplicaciones a proyectos en Chile.**
Eduardo Contreras
99. **Sistemas Complejos Y Gestión Publica**
Mario Waissbluth
100. **Ingeniería de Negocios: Diseño Integrado de Negocios, Procesos y Aplicaciones**
II. Primera Parte
Oscar Barros
101. **Ingeniería de Negocios: Diseño Integrado de Negocios, Procesos y Aplicaciones**
II. Segunda Parte
Oscar Barros
102. **Compañía Sudamericana de Vapores (CSAV): Una empresa chilena globalizada**
Teodoro Wigodski, Juan Rius, Eduardo Arcos
103. **Active learning as source of continuous innovation in courses**
Carlos Vignolo, Sergio Celis, Indira Guggisberg
104. **Learning to Start Starting by Learning**
Carlos Vignolo, Sergio Celis
105. **Ingeniería de Negocios: Diseño Integrado de Negocios, Procesos y Aplicaciones**
II. Tercera Parte
Óscar Barros V.
106. **Caso: Concha y Toro S.A. Modelo de Internacionalización**
Teodoro Wigodski S., Ariel Martínez G., René Sepúlveda L.

**107. Calentamiento Global: Estrategia de acción
Teodoro Wigodski S.**

2009

**108. Decisiones Éticas en Tiempos de Crisis: El Caso del Rescate al Sistema
Financiero y a la Industria Automotriz de EEUU
Teodoro Wigodski, Cristián Espinoza, Guido Silva**

**109. Gestión del Cambio en el Sector Público
Mario Waissbluth**

**110. La Industria del Salmón, el Virus ISA y la Transparencia en la Información al
Mercado: Caso Multiexport
Teodoro Wigodski S., Pablo Herdener M**

**111. Transformación de Conocimiento Tácito en Explicito, Una Revisión Crítica.
Eduardo Contreras**

**112. Explaining the Returns of Chilean Equities: Are All Markets Created Equal?
Gonzalo Maturana F.**

**113. “Ángeles y Demonios” en las Organizaciones: Notas para una Psico-
Sociopatología de la Innovación.
Carlos Vignolo F.**

**114. La Gestión de Organizaciones y Programas Públicos en Chile.
Mario Waissbluth S., José Inostroza L., Eduardo Acuña F., César Avendaño A.**

**115. Propuesta de una Institucionalidad para el Sistema de Evaluación del Gobierno.
Eduardo Contreras, Juan Francisco Pacheco.**

2010

**116. Ángeles Y Demonios En La Gestión Publica Chilena.
Carlos Vignolo, Álvaro Ramírez y Carlos Vergara.**

**117. Buscando Sentido
Teodoro Wigodski y Jacqueline Valenzuela**

**118. Enterprise and Process Architecture Patterns
Oscar Barros and Cristian Julio**

**119. Application of Enterprise And Process Architecture Patterns In Hospitals
Oscar Barros and Cristian Julio**